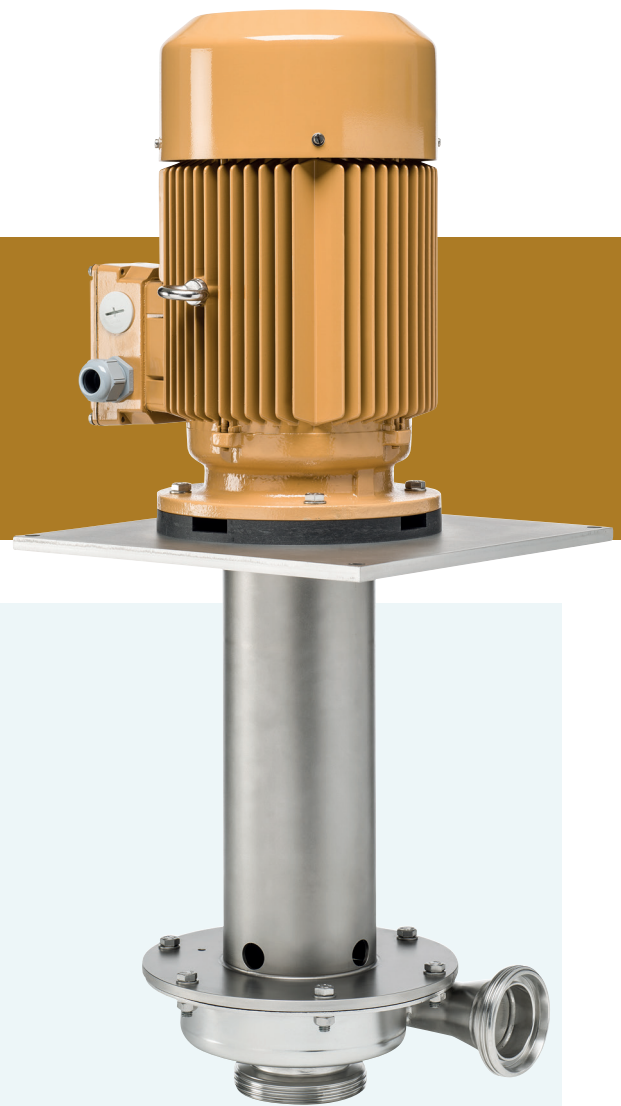


## VERTICAL IMMERSION PUMPS

### Series D16 - Stainless Steel 316L



D16-50-400-SS

**1700 - 67000 l/h**

30 - 1117 l/min

Vertical single stage centrifugal immersion pump, sealless and dry-run safe for non-pressurized tank application. With standard DIN11851 (food/dairy) thread for easy and leak free connection with pipe work.

The D16 series combines maximum hydraulic efficiency with a robust, compact and reliable construction, resulting in maximum installation uptime and a long service life. Ideal for high alkaline cleaners, electroless nickel and all various heavy duty, high temperature applications.

#### Features

- Cantilever design, no seal or bearing, can run dry
- Extended free turning 316L motor shaft
- Self priming when flooded
- Open impeller allowing solids up to 6 mm
- Temperature up to 130°C
- EPDM elastomers
- Shaft labyrinth to prevent vapours attacking motor
- Versions:
  - for in-tank or out-of-tank (OT) installation
  - with discharge pipe (X) and without
- High quality European, purpose designed electric motor:
  - 3 phase, 50/60 Hz, 2900/3500 rpm, IP55, multi voltage
  - with double layer 2C chemical resistant coating
  - suitable for frequency drive control
  - stainless steel fasteners
- DIN11851 threaded connection, for easy loosen and tighten

#### Options

- Nut, liner and seal to complete the union
- Electrochemically polished finish<sup>\*)</sup>
- Isolated potential connection for Protectostat<sup>\*\*)</sup>
- Specific elastomers
- Customised mounting plate, SS or PP
- Suction extension pipe
- Suction strainer
- Version for < 230 Volt
- Electric motor options:
  - EMC compatibility
  - including frequency drive
  - single phase
  - electrical lead (4 m)
  - filter pad for fan cover
  - other RAL colours

<sup>\*)</sup> to be considered for use in electroless nickel

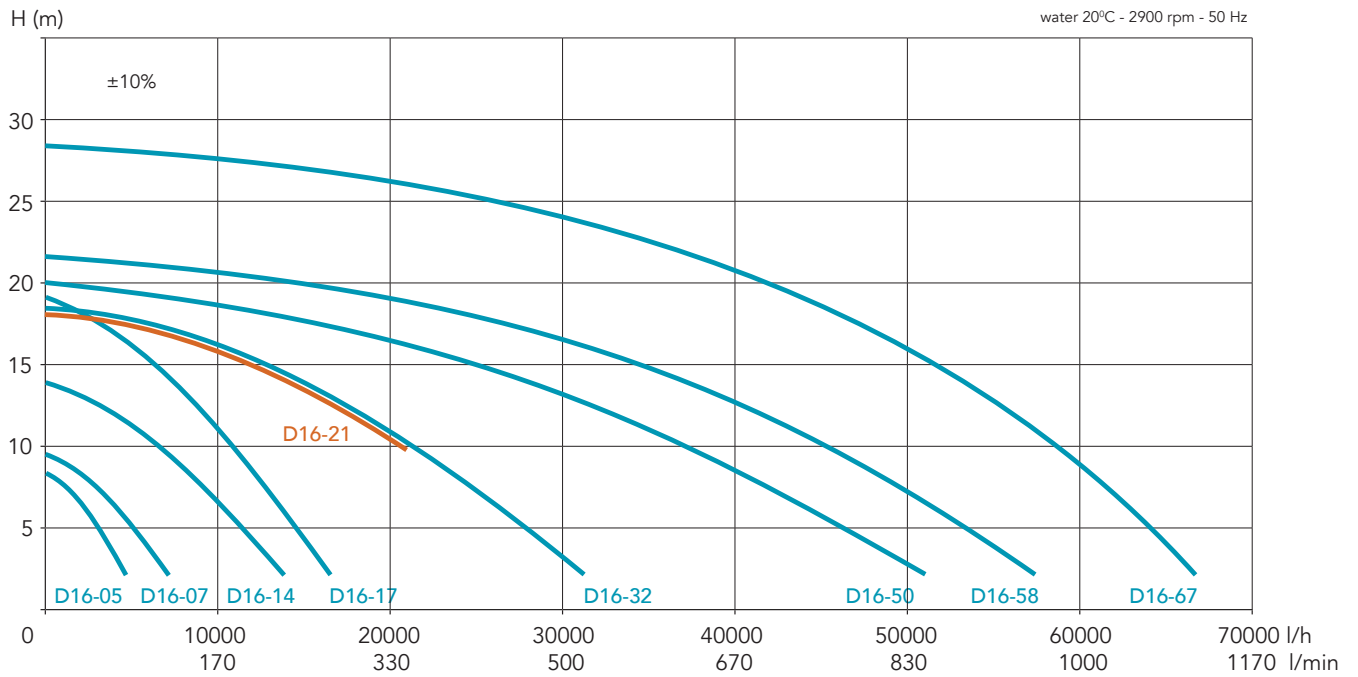
<sup>\*\*)</sup> for OT version in electroless nickel

Type <sup>*)</sup>	Material	Q max (l/h)	H max (m)	Motor		I nom. (A) 400V-50Hz	Outlet thread DIN11851	Immersion length (mm)	Net weight (kg)
D16-05-260	SS	5000	7	0,25	1/3	0,7	DN25	260	9
D16-07-260		7000	9,5	0,37	1/2	1,2	DN25	260	9
D16-14-400		13500	14,5	0,75	1	1,6	DN32	400	23
D16-17-400		17000	19	1,1	1¼	2,3	DN32	400	25
D16-21-400		21000	19	1,5	2	2,9	DN40	400	30
D16-32-400		32000	19	2,2	3	4	DN40	400	38
D16-50-400		50000	20	3	4	5,6	DN50	390	
D16-58-400		58000	21	4	5½	7,2	DN50	390	
D16-67-400		67000	28	5,5	7½	10,2	DN50	390	

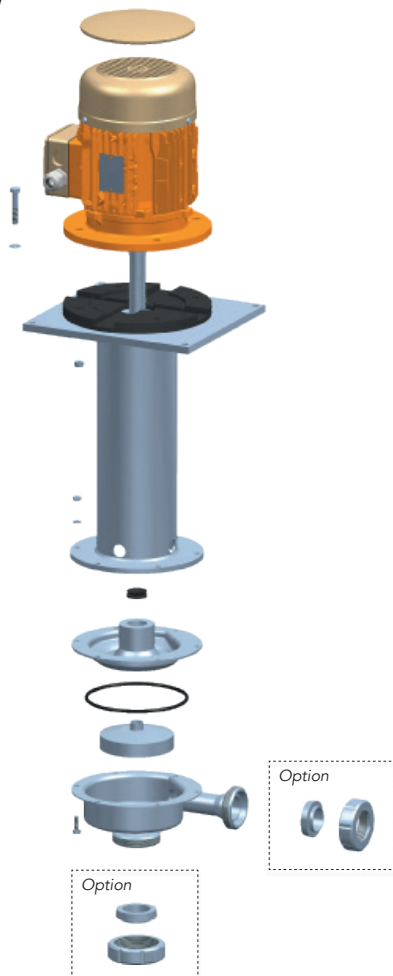
<sup>\*)</sup> For version with discharge pipe add "X" and for Out-of-Tank add "OT". Selection example: D16-07-270-X-SS

T +31 497 339 389  
info@hendor.com

[WWW.HENDOR.COM](http://WWW.HENDOR.COM)



Exploded view  
standard version



D16-14-400-OT-SS



D16-21-400-X-SS  
with options:  
-polished finish  
-union ends